

LIGHTNING AP

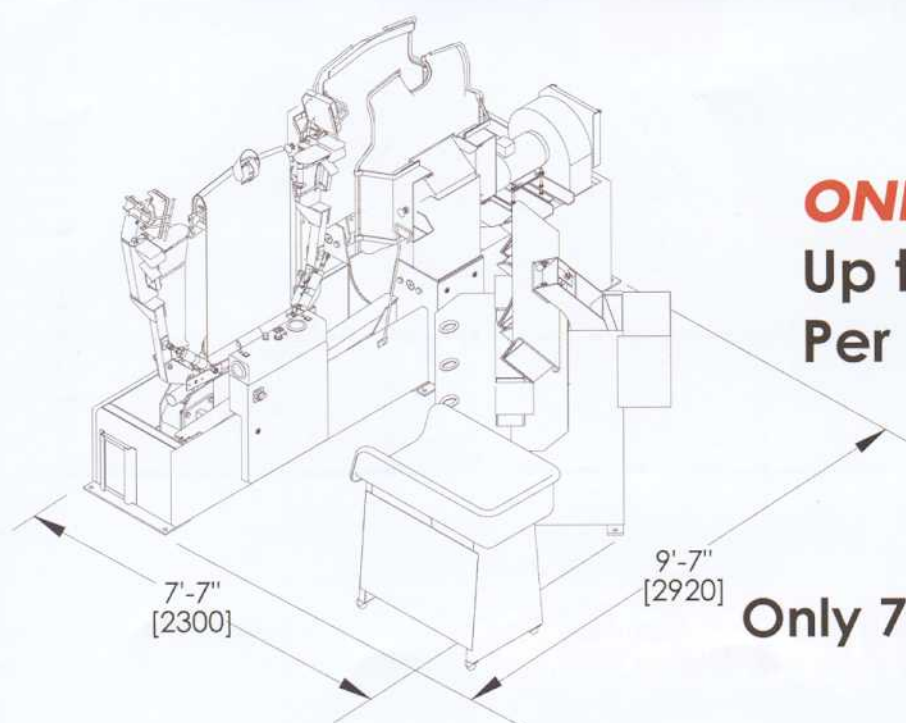
The Difference is Striking



The Lightning Series

UNIPRESS

LIGHTNING AP

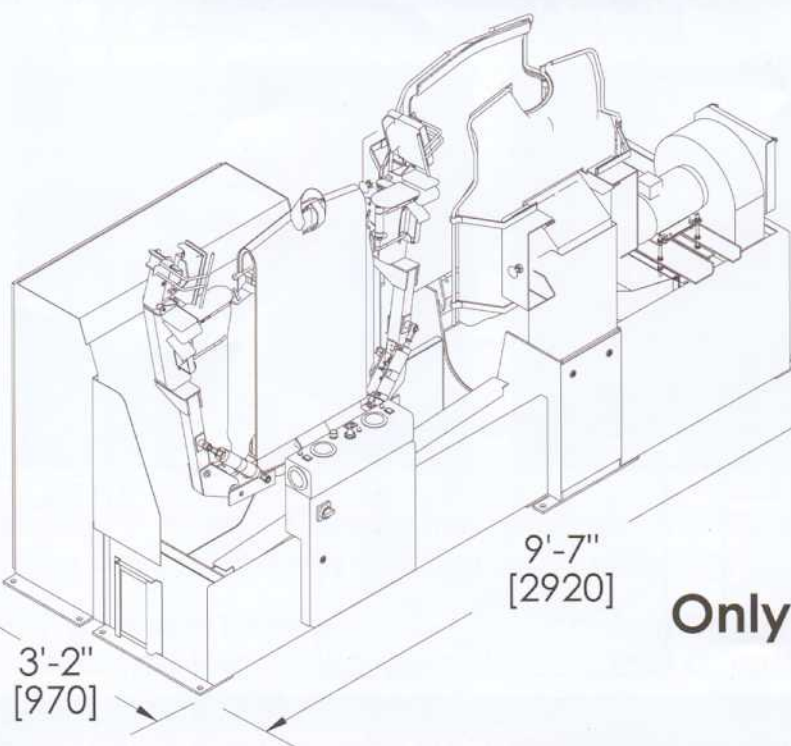


ONE OPERATOR

Up to 60 Beautiful Shirts
Per Hour

Only 75 Square Feet

LIGHTNING AP1



ONE OPERATOR

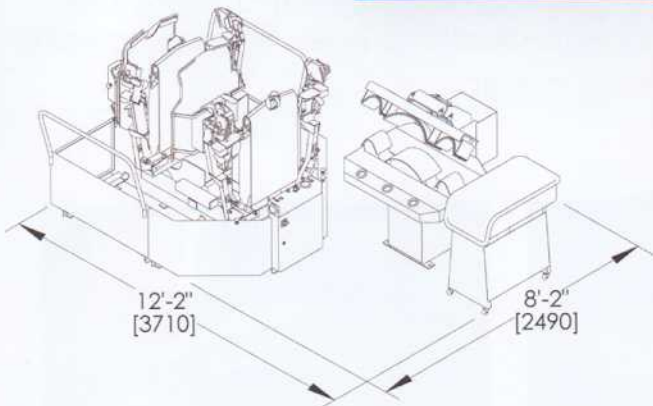
**Up to 60 Beautiful Shirts
Per Hour**

Only 31 Square Feet

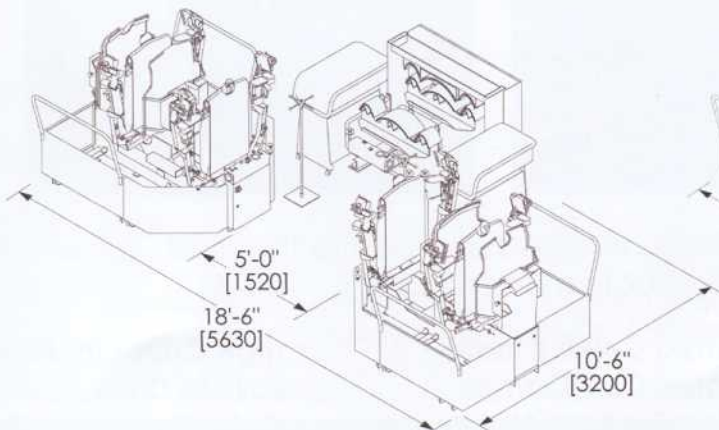
LIGHTNING AP2



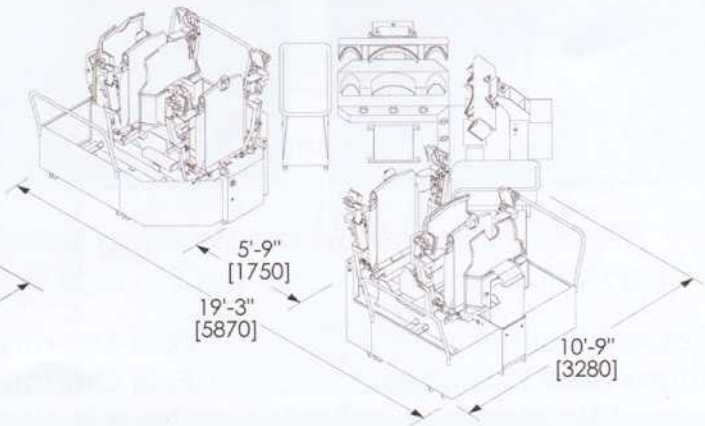
ONE OR TWO OPERATORS
Up to 90 Shirts Per Hour
Only 100 Square Feet



THREE OPERATORS
200+ Shirts Per Hour



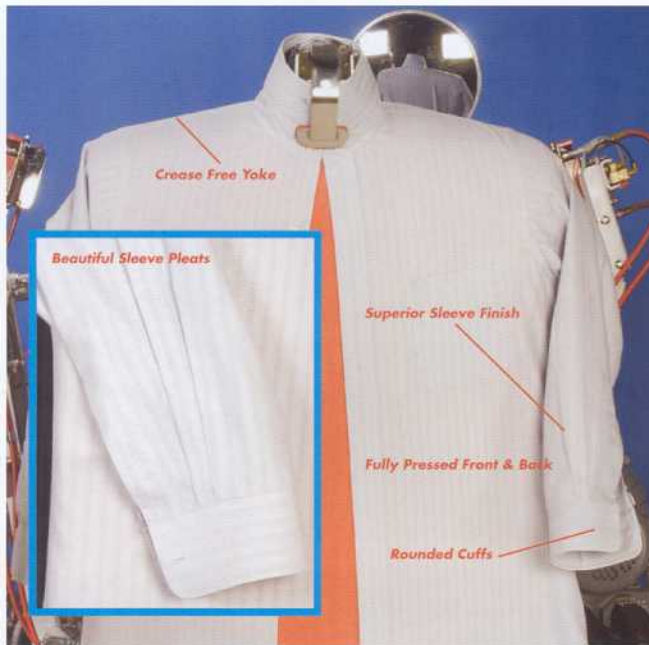
Only 195 Square Feet



Only 210 Square Feet

Power Up Your Profits

Now you can accomplish it all - Improve Quality, Increase Production and Reduce your labor costs. The Lightning Series Shirt Units produce beautifully finished shirts making your shirt department more profitable than ever.

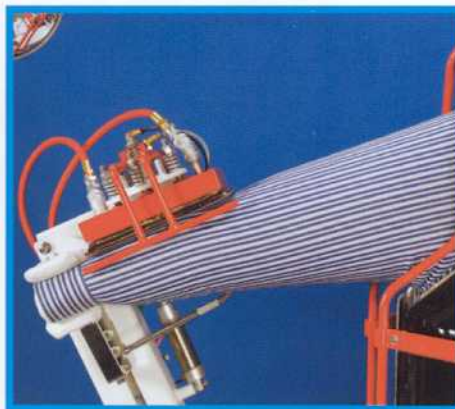
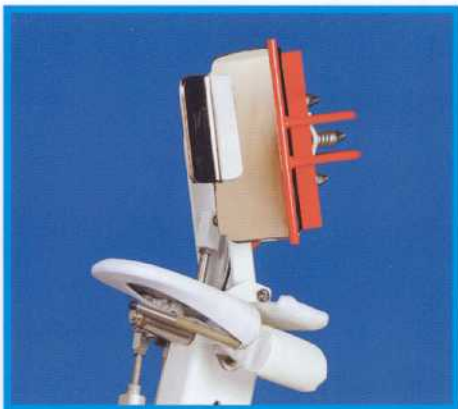


FINISHES UP TO SIZE 20" MEN'S SHIRT

It's All About The Shirt

The Lightning Series features Formed Bucks, Contoured Chests, Side Air Bags and Pleat Enhancers to produce the highest quality shirt. The pleat press heads and cuff holders are specifically designed to press the sleeve pleats and vent without flattening the cuffs.

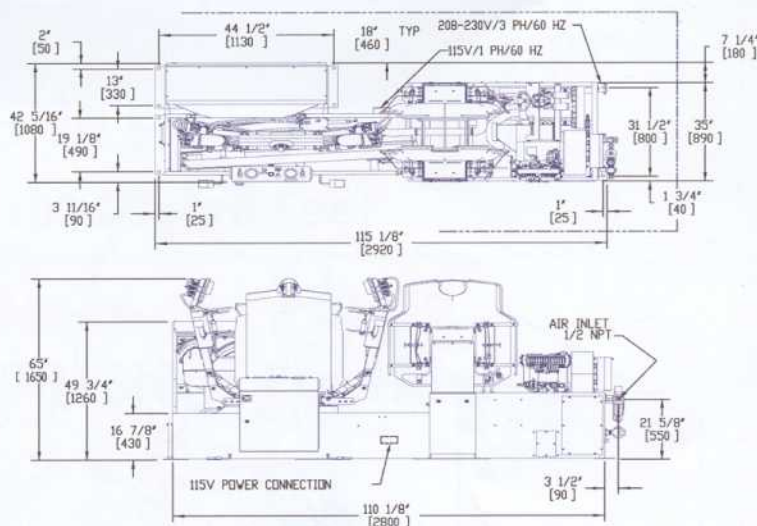
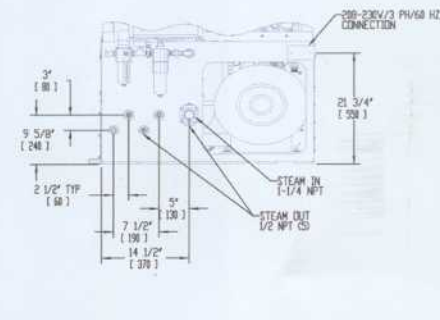
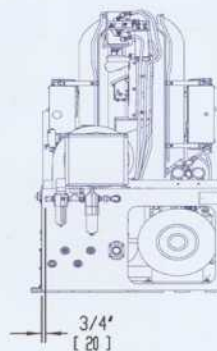
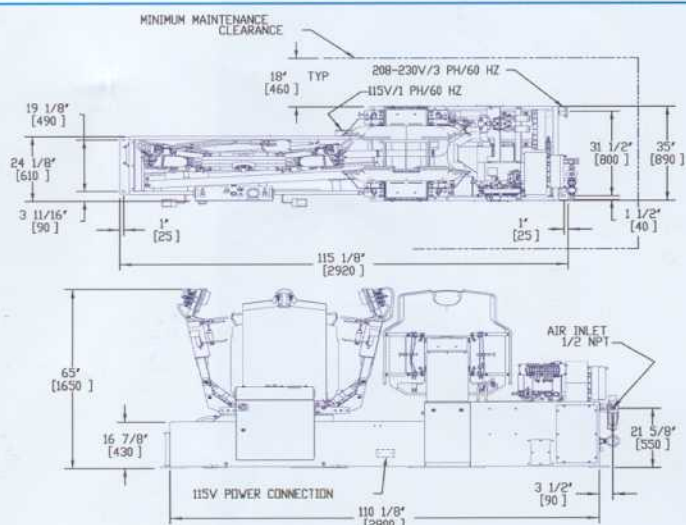
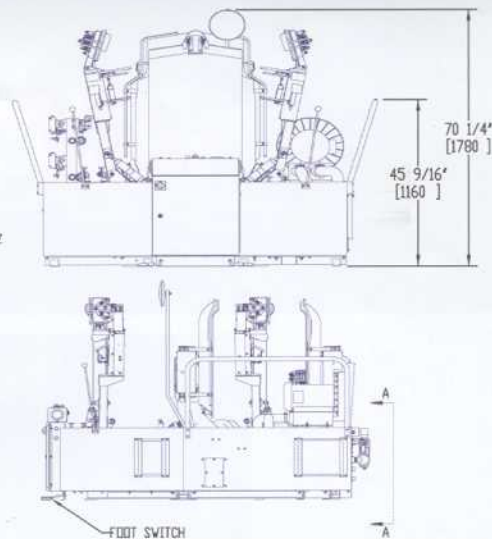
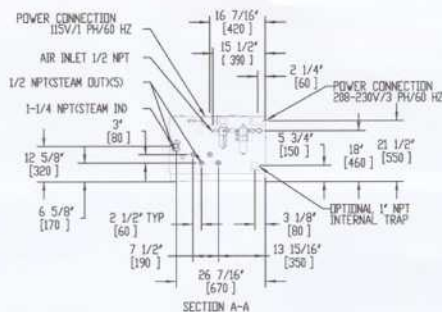
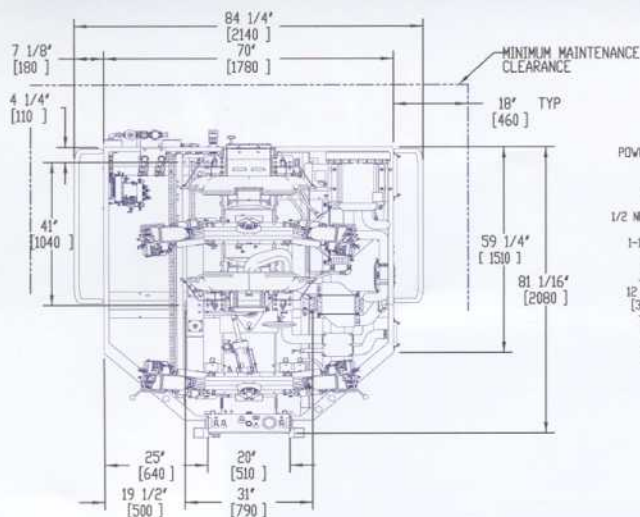
Lightning fast production rates are achieved by superheated air and steam injection that dries and finishes the sleeves quickly. The contoured chests apply high squeeze pressure to the formed buck and air bags for fast drying and a beautiful finish. The buck is quick and to press, making operator training a snap.



Quality Meets Production The Lightning Series is designed and built to the most demanding standards ensuring top quality, high production and reliability.

- Fast Smooth Transfer
- Multi-pass Heat Exchanger
- Scheduled Maintenance Indicator
- Microprocessor Controls w/ Self Diagnostics
- Foot Operated Collar Clamp
- Foot Operated Cuff Clamps
- Open Design For Easy Maintenance
- High Capacity Blower
- Easy to Dress
- Color Coded Air Lines

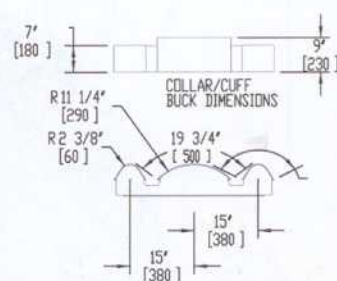
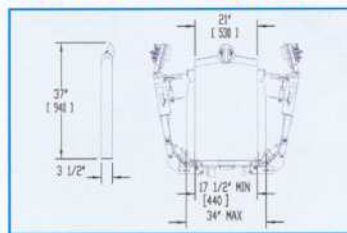
Technical Data Lightning



Specifications

	AP SAE	AP Metric	AP 1 SAE	AP 1 Metric	AP 2 SAE	AP 2 Metric
Overall Height	65"	1650 mm	65"	1650 mm	70.25"	1780 mm
Overall Length	115"	2920 mm	115"	2920 mm	82"	2080 mm
Overall Width	35"	890 mm	42 5/16"	1080 mm	82.25"	2140 mm
Steam Inlet	1-1/4" NPT	1-1/4" NPT	1-1/4" NPT	1-1/4" NPT	1-1/4" NPT	1-1/4" NPT
Steam Outlet	1/2" NPT (5)	1/2" NPT (5)	1/2" NPT (5)	1/2" NPT (5)	1/2" NPT (5)	1/2" NPT (5)
Steam Supply	100-125 psi	7-9 Bar	100-125 psi	7-9 Bar	100-125 psi	7-9 Bar
Boiler Horsepower	2.5 BHP	40 kg/hr	3.25 BHP	52 kg/hr	3.25 BHP	56 kg/hr
Air Inlet	1/2" NPT	1/2" NPT	1/2" NPT	1/2" NPT	1/2" NPT	1/2" NPT
Air Supply	85 PSI	6 Bar	85 PSI	6 Bar	85 PSI	6 Bar
Air Consumption	3.5 Cubic Ft/Cycle	79 liters/cycle	4.5 Cubic Ft/Cycle	102 liters/cycle	6 Cubic Ft/Cycle	136 liters/cycle
Electrical Press	115/1/60	240/1/50	115/1/60	240/1/50	115/1/60	240/1/50
Electrical Motors	208/230/3/60	380-415/3/50	208/230/3/60	380-415/3/50	208/230/3/60	380-415/3/50
Amperage Press	1 AMP @ 115 v		1 AMP @ 115 v		1 AMP @ 115 v	
Amperage Motors	15.4 AMP @ 230	4.6 kw	15.4 AMP @ 230	4.6 kw	15.4 AMP @ 230	4.6 kw
Net Weight	2500 lbs	1045 kg	3400 lbs	1455 kg	2,800 lbs	1200 kg

Buck Dimensions



3501 Queen Palm Drive, Tampa FL 33619

813.623.3731 UnipressCorp.com

UNIPRESS