



AD-758V

MAXIMUM CAPACITY (DRY WEIGHT)		75 lb	34.02 kg	
TUMBLER DIAMETER		36-1/4"	92.08 cm	
TUMBLER DEPTH		36"	91.44 cm	
TUMBLER VOLUME		21.50 cu ft	608.81 L	
TUMBLER (DRIVE) MOTOR Non-Reversing / Reversing		1 hp / 1/2 hp*	0.75 kW / 0.37 kW	
BLOWER (FAN) MOTOR Non-Reversing / Reversing		— / 1 hp*	— / 0.75 kW	
DOOR OPENING (DIAMETER)		31-3/8"	79.69 cm	
DOOR SILL HEIGHT		28"	71.12 cm	
WATER CONNECTION		3/4"-11.5 NH (North America)		
		3/4" B.S.P.T. (Outside North America)		
DRYERS PER 20'/40' CONTAINER		10 / 20		
DRYERS PER 48'/53' TRUCK		24 / 26		
Gas	VOLTAGE AVAILABLE		120-575V 1,3ø 2,3,4w 50/60 Hz	
	APPROXIMATE NET WEIGHT		721 lb 327.04 kg	
	APPROXIMATE SHIPPING WEIGHT		773 lb 350.63 kg	
	AIRFLOW 60 Hz		1,000 cfm	28.32 cmm
			50 Hz	833 cfm 23.60 cmm
	HEAT INPUT		175,000 Btu/hr	44,099 kcal/hr
	EXHAUST CONNECTION (DIAMETER)		8"	20.32 cm
	COMPRESSED AIR CONNECTION		N / A	
	COMPRESSED AIR VOLUME		N / A	
INLET PIPE CONNECTION		3/4" F.N.P.T.		
		3/4" B.S.P.T. (CE and Australia Only)		
Electric	VOLTAGE AVAILABLE		208-575V 3ø 3,4w 50/60 Hz	
	APPROXIMATE NET WEIGHT		721 lb 327.04 kg	
	APPROXIMATE SHIPPING WEIGHT		773 lb 350.63 kg	
	AIRFLOW 60 Hz		1,000 cfm	28.32 cmm
			50 Hz	833 cfm 23.60 cmm
	EXHAUST CONNECTION (DIAMETER)		8"	20.32 cm
	COMPRESSED AIR CONNECTION		N / A	
	COMPRESSED AIR VOLUME		N / A	
	OVEN SIZE		kW Btu/hr kcal/hr	
30 102,400 25,800				
Steam	VOLTAGE AVAILABLE		120-575V 1,3ø 2,3,4w 50/60 Hz	
	APPROXIMATE NET WEIGHT		816 lb 370.13 kg	
	APPROXIMATE SHIPPING WEIGHT		868 lb 393.72 kg	
	AIRFLOW 60 Hz		1,000 cfm	28.32 cmm
			50 Hz	833 cfm 23.60 cmm
	STEAM CONSUMPTION		239 lb/hr	108.41 kg/hr
	OPERATING STEAM PRESSURE		125 psi max	8.62 bar
	EXHAUST CONNECTION (DIAMETER)		8"	20.32 cm
	COMPRESSED AIR CONNECTION		1/8" F.N.P.T.	
	COMPRESSED AIR VOLUME		0.75 cfh	0.02 cmh
	BOILER HORSEPOWER (NORMAL LOAD)		7 Bhp	
	SUPPLY CONNECTION		1" F.N.P.T.	
RETURN CONNECTION		1" F.N.P.T.		

Shaded areas are stated in metric equivalents

EL 9/19/06

* Reversing dryers use 3-phase (3ø) motors.

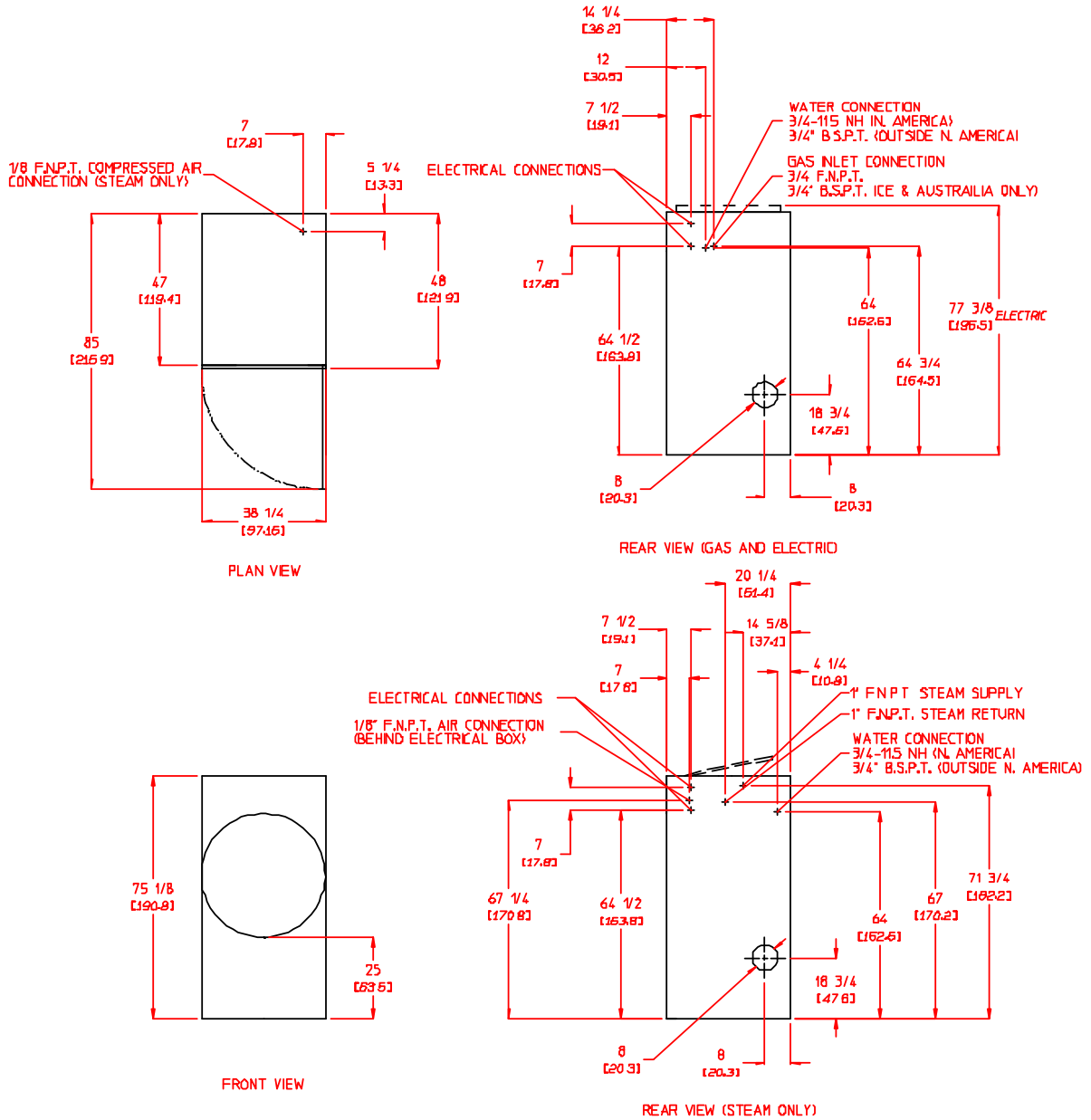
AD-758V

DRYER NOTES:

- DUCTWORK SIZE VARIES WITH INSTALLATION CONDITIONS.
- EXHAUST STATIC PRESSURE MUST BE NO LESS THAN 0 AND MUST NOT EXCEED 0.7" (1.74 MB) WATER COLUMN.

STEAM DRYER NOTES:

- OPERATING HEIGHT OF STEAM DRYER IS 79" (200.6 CM).
- SIZE OF PIPING TO DRYER VARIES WITH INSTALLATION CONDITIONS. CONTACT FACTORY FOR ASSISTANCE.
- STEAM DRYERS MUST BE PROVIDED WITH CLEAN, DRY, REGULATED 80 PSI ± 10 PSI (5.5 BAR ± 0.69 BAR) AIR SUPPLY.



8/25/06



88 Currant Road • Fall River, MA 02720
 Tel. 508-678-9000 • Fax 508-678-9447
 sales@amdry.com • www.amdry.com