



AD-50V

MAXIMUM CAPACITY (DRY WEIGHT)		50 lb	22.68 kg	
TUMBLER DIAMETER		32-3/4"	83.19 cm	
TUMBLER DEPTH		37-1/2"	95.25 cm	
TUMBLER VOLUME		18.30 cu ft	518.20 L	
TUMBLER (DRIVE) MOTOR	Non-Reversing / Reversing	3/4 hp / 1/2 hp*	0.56 kW / 0.37 kW	
BLOWER (FAN) MOTOR	Non-Reversing / Reversing	— / 1/2 hp*	— / 0.37 kW	
DOOR OPENING (DIAMETER)		21-1/2"	54.61 cm	
DOOR SILL HEIGHT		33-1/8"	84.15 cm	
WATER CONNECTION		3/4"-11.5 NH (North America)		
		3/4" B.S.P.T. (Outside North America)		
DRYERS PER 20'/40' CONTAINER		10 / 20		
DRYERS PER 48'/53' TRUCK		24 / 26		
Gas	VOLTAGE AVAILABLE		100-480V 1,3ø 2,3,4w 50/60 Hz	
	APPROXIMATE NET WEIGHT		651 lb 295.29 kg	
	APPROXIMATE SHIPPING WEIGHT		700 lb 317.51 kg	
	AIRFLOW	60 Hz	750 cfm	21.24 cmm
		50 Hz	625 cfm	17.70 cmm
	HEAT INPUT		150,000 Btu/hr	37,799 kcal/hr
	EXHAUST CONNECTION (DIAMETER)		8"	20.32 cm
	COMPRESSED AIR CONNECTION		N / A	
	COMPRESSED AIR VOLUME		N / A	
	INLET PIPE CONNECTION		1/2" M.N.P.T.**	
		1/2" B.S.P.T. (CE and Australia Only)		
Electric	VOLTAGE AVAILABLE		208-575V 1,3ø 2,3,4w 50/60 Hz	
	APPROXIMATE NET WEIGHT		651 lb 295.29 kg	
	APPROXIMATE SHIPPING WEIGHT		700 lb 317.51 kg	
	AIRFLOW	60 Hz	750 cfm	21.24 cmm
		50 Hz	625 cfm	17.70 cmm
	EXHAUST CONNECTION (DIAMETER)		8"	20.32 cm
	COMPRESSED AIR CONNECTION		N / A	
	COMPRESSED AIR VOLUME		N / A	
	OVEN SIZE			
	kW	Btu/hr	kcal/hr	
20	68,200	17,200		
24	81,900	20,600		
30	102,400	25,800		
Steam***	VOLTAGE AVAILABLE		100-480V 1,3ø 2,3,4w 50/60 Hz	
	APPROXIMATE NET WEIGHT		683 lb 309.80 kg	
	APPROXIMATE SHIPPING WEIGHT		733 lb 332.48 kg	
	AIRFLOW	60 Hz	750 cfm	21.24 cmm
		50 Hz	625 cfm	17.70 cmm
	STEAM CONSUMPTION		142 lb/hr	64.41 kg/hr
	OPERATING STEAM PRESSURE		125 psi max	8.62 bar
	EXHAUST CONNECTION (DIAMETER)		8"	20.32 cm
	COMPRESSED AIR CONNECTION		1/8" Quick Connection	
	COMPRESSED AIR VOLUME		0.75 cfh	0.02 cmh
BOILER HORSEPOWER (NORMAL LOAD)		4.1 Bhp		
SUPPLY CONNECTION		1" F.N.P.T.**		
RETURN CONNECTION		1" F.N.P.T.**		

Shaded areas are stated in metric equivalents

EL 09/19/06

* Reversing dryers use 3-phase (3ø) motors.

** Size of piping to dryer varies with installation conditions. Contact factory for assistance.

*** Specify air-operated or electromechanical steam damper system. Air-operated steam damper system must be provided with clean, dry, and regulated 80 psi +/- 10 psi (5.51 bar +/- 0.69 bar) air supply.

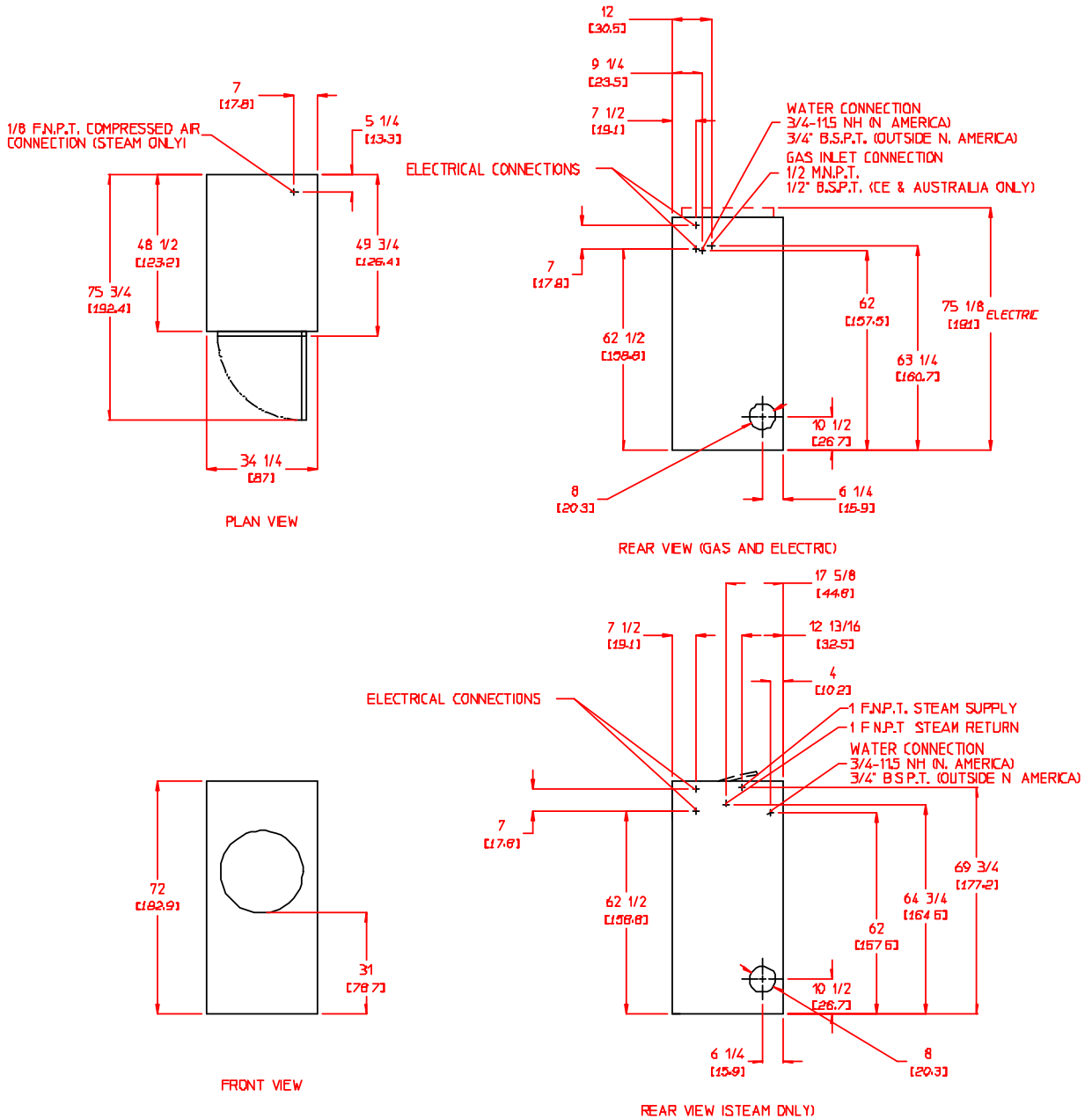
AD-50V

DRYER NOTES:

- ° DUCTWORK SIZE VARIES WITH INSTALLATION CONDITIONS
- ° EXHAUST STATIC PRESSURE MUST BE NO LESS THAN 0 AND MUST NOT EXCEED 0.3" (0.74 MB) WATER COLUMN.

STEAM DRYER NOTES:

- ° OPERATING HEIGHT OF STEAM DRYER IS 78" (1981 CM)
- ° SIZE OF PIPING TO DRYER VARIES WITH INSTALLATION CONDITIONS. CONTACT FACTORY FOR ASSISTANCE.
- ° STEAM DRYERS MUST BE PROVIDED WITH CLEAN, DRY, REGULATED 80 PSI ± 10 PSI (5.5 BAR ± 0.69 BAR) AIR SUPPLY.



PSS 3/9/04



88 Currant Road • Fall River, MA 02720
 Tel. 508-678-9000 • Fax 508-678-9447
 sales@amdry.com • www.amdry.com