



## AD-30V    CG30-40

MAXIMUM CAPACITY (DRY WEIGHT)		30 lb	<b>13.6 kg</b>	
TUMBLER DIAMETER		32-3/4"	<b>83.2 cm</b>	
TUMBLER DEPTH		25-5/8"	<b>65.1 cm</b>	
TUMBLER VOLUME		12.5 cu ft	<b>353.9606 L</b>	
TUMBLER/DRIVE MOTOR	Non-Reversing / Reversing	1/2 hp / 1/2 hp*	<b>0.373 kW / 0.373 kW</b>	
BLOWER/FAN MOTOR	Non-Reversing / Reversing	— hp / 1/2 hp*	<b>— kW / 0.373 kW</b>	
DOOR OPENING (DIAMETER)		21-1/2"	<b>54.61 cm</b>	
DOOR SILL HEIGHT		33-1/8"	<b>84.15 cm</b>	
WATER CONNECTION		3/4-11.5 NH (North America) 3/4" B.S.P.T. (Outside North America)		
DRYERS PER 20'/40' CONTAINER		12 / 26		
DRYERS PER 48'/53' TRUCK		30 / 32		
<b>Gas</b>	VOLTAGE AVAILABLE		120-480V 1,3ø 2,3,4w 50/60 Hz	
	APPROXIMATE NET WEIGHT		534 lb <b>242 kg</b>	
	APPROXIMATE SHIPPING WEIGHT		571 lb <b>259 kg</b>	
	AIRFLOW	60 Hz	460 cfm	<b>13 cmm</b>
		50 Hz	383 cfm	<b>10.85 cmm</b>
	HEAT INPUT		100,000 Btu/hr	<b>25,200 kcal/hr</b>
	EXHAUST CONNECTION (DIAMETER)		8"	<b>20.32 cm</b>
	COMPRESSED AIR CONNECTION		N / A	
	COMPRESSED AIR VOLUME		N / A	
	INLET PIPE CONNECTION		1/2" M.N.P.T. 1/2" B.S.P.T. (CE and Australia Only)	
<b>Electric</b>	VOLTAGE AVAILABLE		208-460V 1,3ø 2,3,4w 50/60 Hz	
	APPROXIMATE NET WEIGHT		534 lb <b>242 kg</b>	
	APPROXIMATE SHIPPING WEIGHT		571 lb <b>259 kg</b>	
	AIRFLOW	60 Hz	460 cfm	<b>13 cmm</b>
		50 Hz	383 cfm	<b>10.85 cmm</b>
	EXHAUST CONNECTION (DIAMETER)		8"	<b>20.32 cm</b>
	COMPRESSED AIR CONNECTION		N / A	
	COMPRESSED AIR VOLUME		N / A	
	OVEN SIZE			
	kW	Btu/hr	<b>kcal/hr</b>	
20	68,200	<b>17,200</b>		
24	81,900	<b>20,600</b>		
<b>Steam**</b>	VOLTAGE AVAILABLE		120-480V 1,3ø 2,3,4w 50/60 Hz	
	APPROXIMATE NET WEIGHT		593 lb <b>269 kg</b>	
	APPROXIMATE SHIPPING WEIGHT		631 lb <b>286 kg</b>	
	AIRFLOW	60 Hz	460 cfm	<b>13 cmm</b>
		50 Hz	383 cfm	<b>10.85 cmm</b>
	STEAM CONSUMPTION		104 lb/hr	<b>47.2 kg/hr</b>
	OPERATING STEAM PRESSURE		125 psi max	<b>8.6 bar</b>
	EXHAUST CONNECTION (DIAMETER)		8"	<b>20.32 cm</b>
	COMPRESSED AIR CONNECTION		1/8" F.N.P.T.	
	COMPRESSED AIR VOLUME		0.5 cfm	<b>0.014 cmh</b>
	BOILER HORSEPOWER (NORMAL LOAD)		3.0 Bhp	
	SUPPLY CONNECTION		1" F.N.P.T.	
	RETURN CONNECTION		1" F.N.P.T.	

Shaded areas are stated in metric equivalents

1/5/04

\* Reversing dryer available with 3-phase (3ø) 1/2 hp (0.373 kW) motor standard.

\*\* Specify air-operated or electromechanical steam damper system. Air-operated steam damper system must be provided with clean, dry and regulated 80 psi ± 10 psi (5.51 bar ± 0.68 bar) air supply.

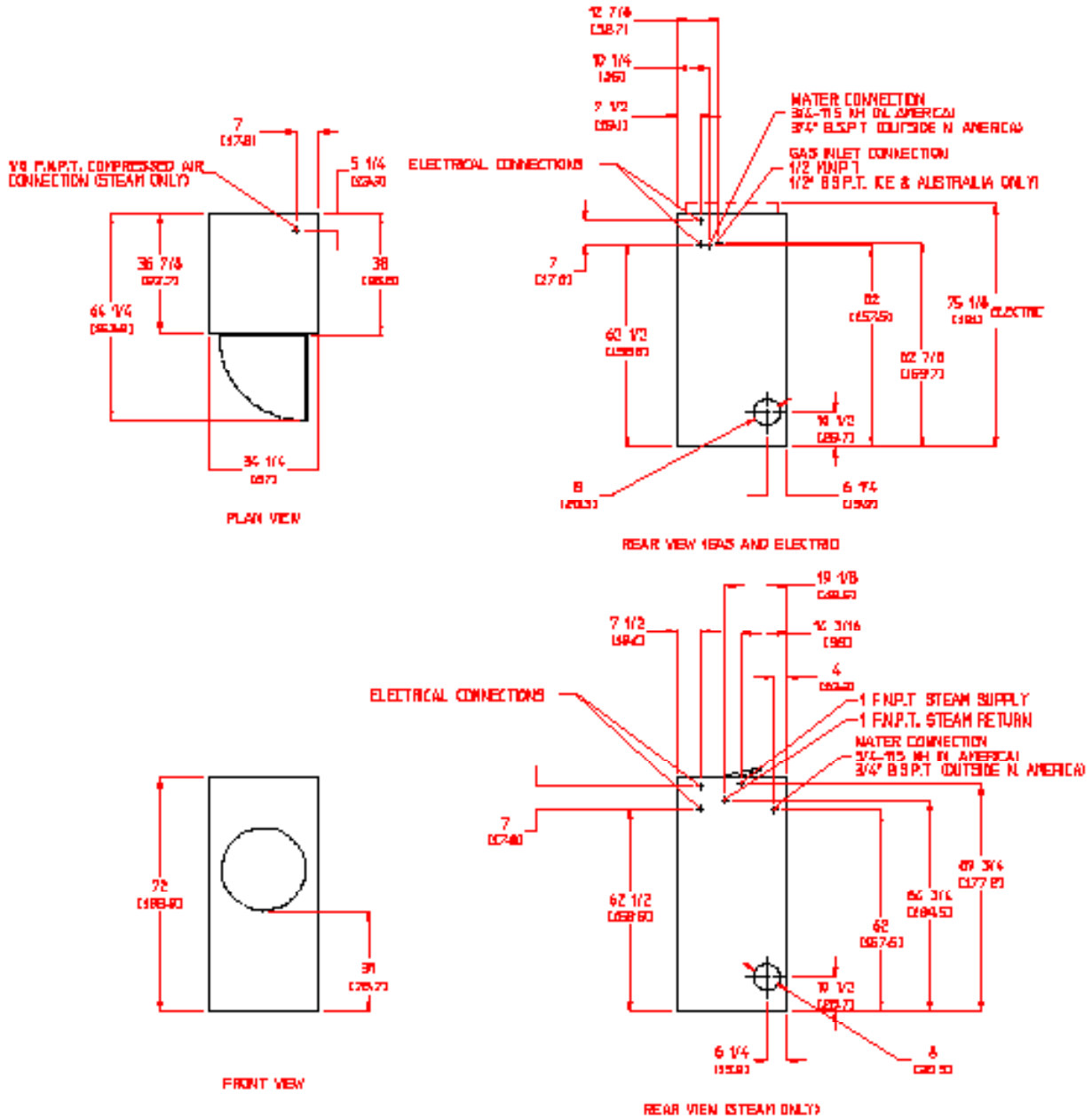
# AD-30V

## DRYER NOTES

- DUCTWORK SIZE VARIES WITH INSTALLATION CONDITIONS.
- EXHAUST STATIC PRESSURE MUST BE NO LESS THAN 0 AND MUST NOT EXCEED 0.5" 10.7% W.B. WATER COLUMN.

## STEAM DRYER NOTES

- OPERATING HEIGHT OF STEAM DRYER IS 27" (690.50)
- SIZE OF PIPING TO DRYER VARIES WITH INSTALLATION CONDITIONS. CONTACT FACTORY FOR ASSISTANCE.
- STEAM DRYERS MUST BE PROVIDED WITH CLEAN, DRY, REGULATED 80 PSI • 10 PSI (5.5 BAR • 0.68 BARI) AIR SUPPLY.



12/9/03



88 Currant Road • Fall River, MA 02720  
 Tel. 508-678-9000 • Fax 508-678-9447  
 sales@amdry.com • www.amdry.com