



# INDUSTRIAL PACKAGED STEAM BOILER

Horizontal Drum Sectional Water Tube  
70 to 150 HP Gas Fired

## THE PARKER DESIGN

The Parker water tube design offers an extremely efficient, reliable steam boiler built for the long term and ease of maintenance. The Parker design offers many advantages. Compare ours to the competition.

## ADVANTAGES

### 1. Safety

The Parker tube bundle is extremely flexible and offers a long life with a 20 year warranty against thermal shock. No Parker Boiler has ever been known to experience an internal explosion.

### 2. Large Heating Surface

A large amount of heating surface provides increased efficiency, long boiler life and minimizes chances of scaling. Compare ours to the competition.

### 3. Simplicity

The Atmospheric Burner System, the control system and entire boiler are furnished so that it is simple to operate by regular personnel. Simplicity is a decided advantage as there are no expensive blowers, complicated controls, or burner adjustments, as is necessary on many boilers.

### 4. Codes

All Parker Steam Boilers are manufactured in accordance with the ASME Power & Heating Boiler Codes and registered with the National Board of Boiler and Pressure Vessel Inspectors.

The standard natural gas fired model is furnished as an Underwriters' Laboratories, Inc. Listed Gas Fired Boiler Assembly and displays their symbol on the nameplate. Outdoor, propane and Low NOx models are ETL listed. Canadian models are C-ETL Listed Industrial and Commercial Gas Fired Packaged Boilers certified to CAN/CGA 1-3.1 and UL 795.

## PARKER BOILER CO.

5930 Bandini Boulevard  
Los Angeles CA 90040  
Tel (323) 727-9800  
Fax (323) 722-2848  
www.parkerboiler.com

BROCHURE 105 0F3

105 Steam Boilers 70-150 HP

Industrial Packaged  
Steam Boiler  
Pressures to 250 PSI



### 5. Internal Accessibility – Inspection

Cabinet doors can easily be removed in a matter of minutes, making the internal boiler, drum, tubes, and burners readily accessible. Easy-to-remove gasketed access plugs are provided at both ends of every tube. Boiler inspections can be accomplished quickly and at low costs.

### 6. Ease of Inspection and Repair

Any boiler may eventually require retubing depending on care and operating conditions. Retubing does not require special tools, skills or welding as is necessary on most boilers. Tubes are reversible and replaceable through the cabinet door.

**"Never a Compromise for Quality or Safety"**



# INDUSTRIAL PACKAGED STEAM BOILER

## Horizontal Drum Sectional Water Tube

70 to 150 HP Gas Fired



### 105 Steam Boilers 70-150 HP

Safety valve  
(one only on 70 HP and 90 HP)

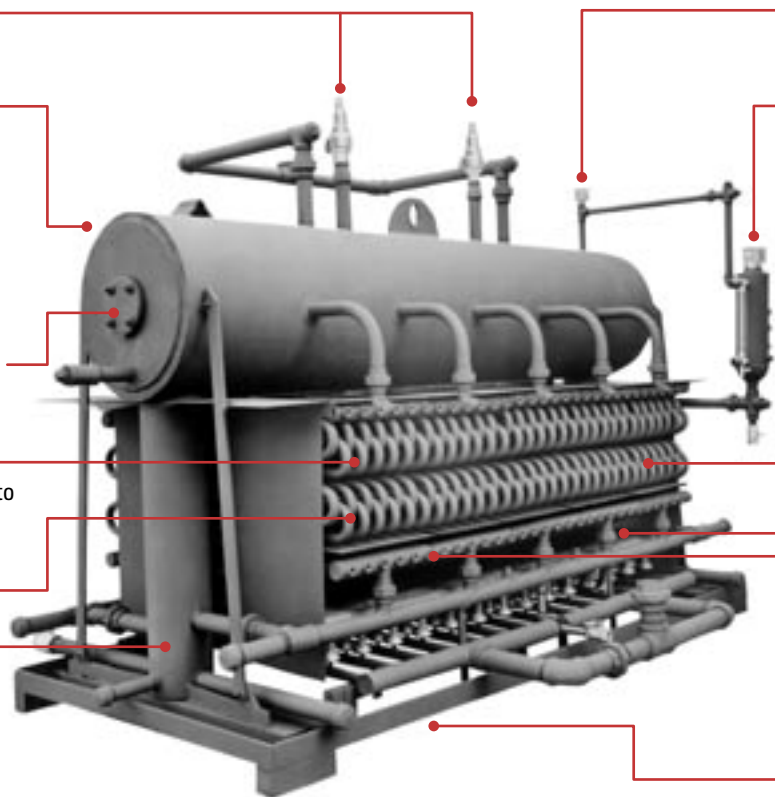
Horizontal steam drum 24" diameter heavy seamless 1/2" thick with extra heavy 1-1/8" flat welded heads. Over 60,000 PSI tensile strength. All drum screwed openings swaged for extra heavy thickness.

Flanged inspection openings- both heads.

Tubes: 1-5/16" OD heavy thickness .133" double welded to headers.

Staggered tubes flexibly designed for free expansion and contraction provide 12 pass self-baffled heating surface.

Drum downcomer leg with inspection cleanout openings with blowoff valves at bottom, both sides.



Secondary, M.R. probe type low water cutoff.

Water level pump control & primary low water cutoff.

Tubes are furnished in individual sections each attached by two union connections.  
70 HP - 6 sections  
90 HP - 8 sections  
115 HP - 10 sections  
150 HP - 14 sections

Parker T-type atmospheric gas burners provide high combustion efficiency, uniform heat distribution and quiet operation.

Easy to remove tube access plugs on tube headers.

Heavy Steel Boiler frame for setting on concrete floor.

Automatic burner controls include 100% flame safeguard, dual electric gas valves and modulating fire on natural gas.

### THE PARKER DESIGN

A time proven product backed by one of the largest and most successful manufacturers of packaged steam boilers whose name is synonymous with quality and safety. Every boiler is thoroughly factory fire tested and is required to meet the highest standards in all phases of mechanical and operating efficiency before shipment.

### ADVANTAGES

#### 7. Dry Steam

Our large horizontal steam drum provides ample steam release area to assure dry steam delivery. No steam separators are required.

#### 8. Heavy Duty Tubes

Parker tubes are 1-5/16" O.D. Grade SA-53 steel heavy .133" thickness which is almost double that of standard gauge boiler tubing. Each tube is double-welded to assure a rugged connection.

#### 9. Fast Heat-Up

Our boiler requires less than ten minutes to heat up to 100 PSI from a cold start which is a considerable time and fuel saver.

#### 10. Low Cost Operation

The staggered tubing design provides a 12 pass heating surface to increase efficiency.

#### 11. Heavy Insulated Cabinet

The cabinet is durably constructed with two thicknesses of heavy steel, insulated on all sides with high temperature thermal fiber insulation to effectively reduce heat losses to a minimum.



**"Never a Compromise for Quality or Safety"**

**PARKER BOILER CO.**  
5930 Bandini Boulevard  
Los Angeles CA 90040  
Tel (323) 727-9800  
Fax (323) 722-2848  
www.parkerboiler.com

BROCHURE 105 0F3