

# Washer extractors

## W4240H, W4300H

### Features and benefits

- High extraction force for efficient dewatering
- Available with two types of program controls:
  - Compass Control® with:**
    - Large display and one dial for easy program selection
    - Language selection
    - Two Quick Start buttons for frequently used wash programs
    - Wash program packages optimized on *Economy*, *Performance* and *Time*
  - Clarus Control® with:**
    - Fully programmable microprocessor
    - All relevant wash parameters can be programmed
    - Programming from key pad or downloading via memory card
- AWS – Automatic Weighing System with Compass Control – determine the wash load and adopt the water intake accordingly. Savings on water and energy if machine is not fully loaded
- Extremely low water and energy consumption – see table below
- Four compartment soap box for manual dosing of powder or liquid detergent
- Stainless steel front panel and grey side panels
- Large door opening for easy loading/unloading
- Low noise level, for pleasant working environment
- SuperBalance™ guarantees the correct extraction force



Clarus Control

### Main options

- Automatic liquid detergent supply (optional I/O board for Compass Control)
- IWS – Integrated Weighing System™ – actual load will be shown in the display (Clarus Control only)
- Stainless steel side panel (Clarus Control only)
- Connection to payment system or coin meter (Compass Control only)



Compass Control

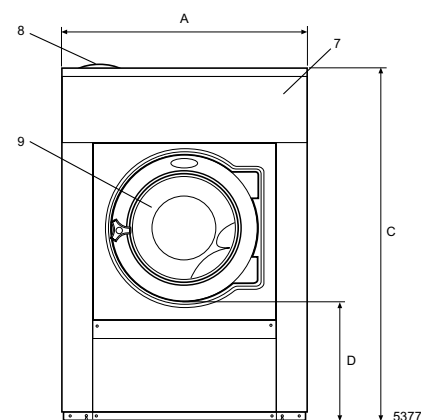
Main specifications			W4240H	W4300H
Max. capacity		kg/lb	27/60	33/75
Drum, volume		litre/ft³	240/8.5	300/10.6
diameter		ø mm/inch	795 / 31 5/16	795 / 31 5/16
Extraction		rpm	890	820
G-factor			350	300
Heating alternatives,	electricity	kW	19.4	19.4
	steam		x	x
	non-heated		x	x
<b>Consumption data "WARM" * (3S03)</b>				
Total time		min	31	32
Water consumption (cold+hot)		litre/gallon	293+13 / 77.4+3.4	388+19 / 102.5+5
Energy consumption (motor)		kWh	0.3	0.3

\* Water temperature 59°F cold water and 149°F hot water.

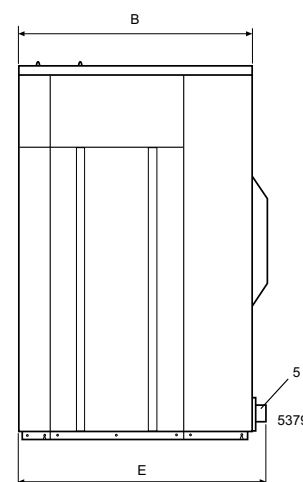
Electrical connections*			W4240H	W4300H
Heating	Voltage			
El.	208-240V 3AC 60 Hz	kW(A)	20.9(63)	19.4(63)
Steam	208-240V 1AC 60 Hz	kW(A)	3.0(15)	2.1(15)
or non-heated	100-120V 1AC 60 Hz	kW(A)	3.0(15)	2.1(15)
Water and steam connection				
Water valves	inch		3/4	3/4
Water pressure	psi		30-90	30-90
Capacity at 45 psi	l/min / gallon/min		60/15	60/15
Drain valve	ø mm/inch		75/3	75/3
Draining capacity	l/min / gallon/min		170/45	170/45
Steam valve	inch		1/2	1/2
Steam pressure	psi		45-90	45-90
Liquid detergent supplies			5	5
Floor requirements				
Frequency of the dynamic force	Hz		14.8	13.7
Max floor load at extraction	kN		5.2 ± 1.0	5.5 ± 1.3
	lbs force		1158 ± 221	1387 ± 277
Sound levels				
Sound pressure level**	dB(A)		78	76
Sound power level (IEC 60704-2-4)	dB(A)		83	83
Heat emission				
% of installed power, max			5	5
Shipping data				
Weight	net, kg/lbs		400/882	509/1122
	crated, kg/lbs		448/988	528/1164
Shipping volume	m <sup>3</sup> /ft <sup>3</sup>		1.79/63.2	2.1/74.2
Accessories				
Steel base frame			x	x
Water re-use tank (Clarus Control)			x	x
Hose kits for water or steam			x	x
Fluff collector			x	x
Dimensions in mm/inch				
A Width			1020 / 40 3/16	1020 / 40 3/16
B Depth			915 / 36	1060 / 41 3/4
C Height			1445 / 56 7/8	1445 / 56 7/8
D			500 / 19 11/16	500 / 19 11/16
E			955 / 37 5/8	1135 / 44 11/16
F			1155 / 45 1/2	1155 / 45 1/2
G			100 / 3 15/16	100 / 3 15/16
H			1360 / 53 9/16	1360 / 53 9/16
I			215 / 8 7/16	215 / 8 7/16
K			1320 / 51 15/16	1320 / 51 15/16
L			300 / 11 13/16	300 / 11 13/16
M			380 / 14 15/16	380 / 14 15/16
N			100 / 3 5/6	100 / 3 5/6
O			360 / 14 3/16	360 / 14 3/16
P			510 / 20 1/16	335 / 13 3/16
1 Electrical connections		6 Liquid supply connections		
2 Cold water		7 Control panel		
3 Hot water		8 Soap box		
4 Steam connection		9 Door opening ø 435 mm / 17 1/8 inch		
5 Drain				

\* Other voltages available, see installation manual.

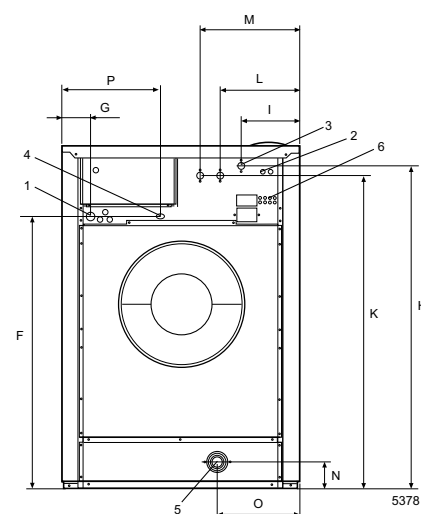
\*\* Approx. value at operators position in a mid-size laundry room.



Front



Right side



Rear side