

Washer extractor

W4600H, W4850H, W41100H

Features and benefits

- High extraction force for efficient dewatering
- Clarus Control® fully programmable, microprocessor with up to 192 programs
- Large door opening for easy loading/unloading
- Prepared for 13 liquid detergent signals
- Eight liquid supply connections
- Stainless steel in all vital parts for high degree of rust protection
- Stainless steel front panels and powder painted side panels
- Direct steam heating
- Electrical heating (only W4600H)
- Frequency controlled motor for max. versatility
- Oil lubrication of bearing gaskets
- Designed for easy service and maintenance
- SuperBalance™ guarantees the correct extraction force

Main options

- Forward tilting or forward/backward tilting with full controlled reversing action
- Noise/heat insulation, <70 dB(A)
- Test tap with level tube
- Dual drain valves for water/solvent recovery
- Five-compartment supply injector
- Third water valve
- Large water valves (DN 50/2") (not W4600H)
- Integrated Weighing System™ (IWS)
- Oil lubrication of bearing gaskets with warning for empty container
- Connection of intelligent detergent systems (DMIS)



Main specifications				W4600H	W4850H	W41100H
Max. capacity	kg/lb			65/135	90/200	120/250
Drum, volume	litre/ft³			600/21.2	850/30	1100/38.8
diameter	ø mm/inch			980 / 38 9/16	1220 / 48 1/16	1220 / 48 1/16
Extraction	rpm			800	720	663
G-factor				350	350	300
Heating alternatives	steam			x	x	x
	non-heated			x	x	x
	electricity		kW	36 or 54	-	-
Consumption data "WARM" (7G02) *				Steam**	El 36 kW	El 54 kW
Total time (cold+hot/cold)	min			42/49	44/-	43/-
Water consumption (cold+hot)	litre			563+171	563/171	563/171
	gallon			149+45	149+45	149+45
Energy consumption (motor/heating)	kWh			1.2/-	1.2/2.4	1.2/2.4
Steam consumption (cold+hot)	kg/lbs			3.6	-	-
Steam consumption (cold)	kg/lbs			19	-	-
					4.8/10.6	6.4/14.1
					25.8/57	30.9/68.1

* Water temperature 59°F cold water and 149°F hot water.

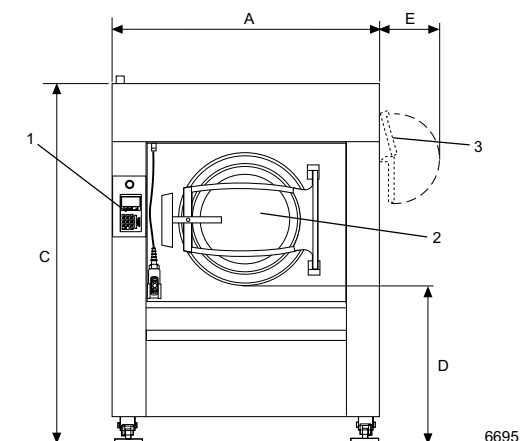
** Steam at 44-58 psi.

Electrical connections*			W4600H	W4850H	W41100H
Heating EI	Voltage				
	208-240V 3AC 60 Hz	kW(A)	38 (100)	–	–
	208-240V 3AC 60 Hz	kW(A)	56 (160)	–	–
	440V 3AC 60 Hz	kW(A)	38 (63)	–	–
	440V 3AC 60 Hz	kW(A)	56 (80)	–	–
Steam or non-heated	208-240V 3AC 60 Hz	kW(A)	4 (15)	6.7 (20)	5.3 (20)
	440V 3AC 60 Hz	kW(A)	4 (15)	6.7 (15)	5.3 (15)
Water, steam and air connections					
Water valves		inch	1 1/4	1 1/2	1 1/2
Rec. Water pressure		psi	30-90	30-90	30-90
Function limits for water valve		psi	10-145	10-145	10-145
Capacity at 300 kPa	l/min / gallon/min		150/37	200/53	200/53
Drain valve		ø mm/inch	110 / 4 5/6	110 / 4 5/6	110 / 4 5/6
Draining capacity	l/min / gallon/min		400/100	400/100	400/100
Steam valve		inch	3/4	1/2	1/2
Rec. Steam pressure		psi	45-90	45-90	45-90
Function limits for steam valve		psi	8-120	8-120	8-120
Compressed air		inch	1/8	1/8	1/8
Air pressure		psi	30-60	30-60	30-60
Air consumption	l/h / gallon/h		20/5	20/5	20/5
Floor requirements					
Frequency of the dynamic force		Hz	12.7	12.0	11.1
Max floor load at extraction		kN	15.9±6.4	22±7.3	24±7.3
Sound levels					
Sound level		dB(A)	76	73	73
Sound level, with insulation		dB(A)	< 70	< 70	< 70
Heat emission					
% of installed power, max 90°			6	6.7	6.8
Shipping data					
Shipping volume	net, kg/lbs m³/ft³		1380/3042 5.7/201	2200/4850 7.6/269	2300/5071 8.4/297

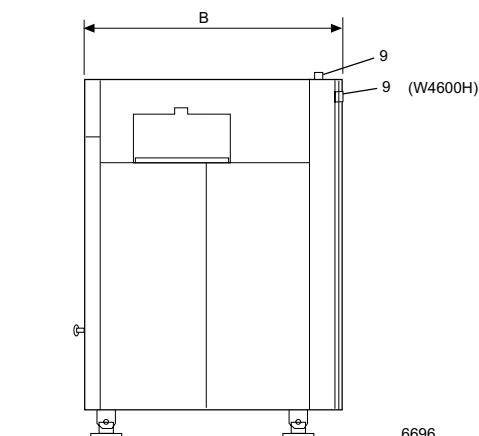
* Other voltages available, see installation manual.

Dimensions in mm/inch		W4600H	W4850H	W41100H
A	Width	1390 / 54 3/4	1640 / 64 9/16	1640 / 64 9/16
B	Depth	1585 / 62 3/8	1635 / 64 3/8	1850 / 72 13/16
C	Height	2015 / 79 5/16	2230 / 87 13/16	2230 / 87 13/16
D		910 / 35 13/16	995 / 39 3/16	995 / 39 3/16
E		300 / 11 13/16	380 / 14 15/16	380 / 14 15/16
F		1865 / 73 7/16	2135 / 84 1/16	2135 / 84 1/16
G		270 / 10 5/8	1070 / 42 1/8	1070 / 42 1/8
H		660 / 26	830 / 32 11/16	830 / 32 11/16
I		525 / 20 11/16	635 / 25	635 / 25
K		425 / 16 3/4	445 / 17 1/2	445 / 17 1/2
L		960 / 37 13/16	1140 / 44 7/8	1140 / 44 7/8
M		1425 / 56 1/8	1660 / 65 3/8	1660 / 65 3/8
N		420 / 16 9/16	435 / 17 1/8	435 / 17 1/8
O		435 / 17 1/8	820 / 32 5/16	820 / 32 5/16
P		2200 / 86 5/8	2410 / 94 7/8	2400 / 94 1/2
R		1120 / 44 1/8	1175 / 46 1/4	1160 / 45 11/16
S		2225 / 87 5/8	2480 / 97 5/8	2480 / 97 5/8
T		935 / 36 13/16	960 / 37 13/16	955 / 37 5/8
U		300 / 11 13/16	285 / 11 1/4	240 / 9 7/16
V		325 / 12 13/16	400 / 15 3/4	335 / 13 3/16

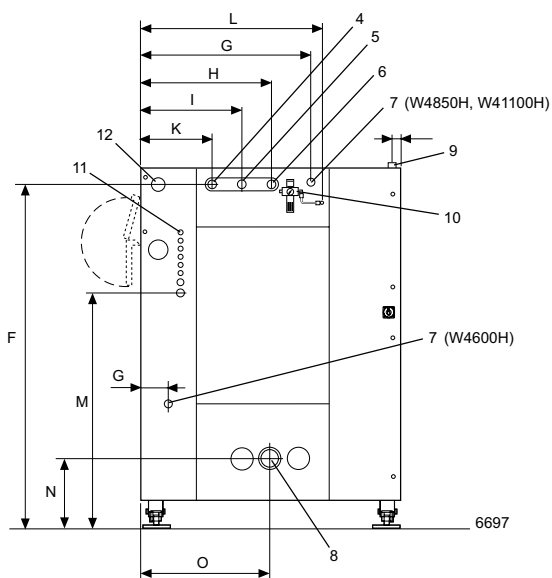
- 1 Control panel
- 2 Door opening \varnothing 700 / 27 9/16 inch
- 3 Soap supply injector, powder (optional)
- 4 Cold water connection
- 5 Hot water connection
- 6 Third water connection (optional)
- 7 Steam connection
- 8 Drain
- 9 Electrical connection
- 10 Compressed air
- 11 External liquid supply, 6 pcs \varnothing 10, 1 pc \varnothing 16 and 1 pc \varnothing 20
- 12 Water connection, soap supply injector (optional)



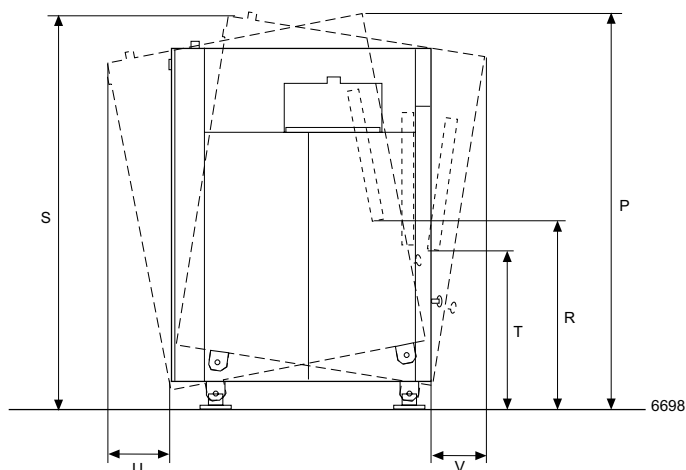
Front



Right side



Rear side



The movement when tilting

Options

- Forward or forward/backward tilting device – for easy unloading with drum reversing into trolley.
- Noise/heat insulation – reduce the airborne sound to less than 70 dB(A).
- Test tap with level tube – gives possibilities to take samples from the wash liquid.
- Water/solvent recovery system – two drain valves to be able to recover water from the rinses and reuse it in the wash.
- Five-compartment supply injector (5x2 litres), right hand side (only W4850H, W41100H).
- Five compartment supply injector (5x1 litre), front mounted (only W4850H, W41100H), front or side mounted (only W4600H).
- Oil lubrication of bearing gaskets with warning for empty container.
- Large water valves (DN 50/2") (not W4600H).
- Connection of intelligent detergent system (DMIS).
- Third water valve - electrically controlled water valve for e.g hard water.
- Connection details for steam.
- Connection details for 2 water.
- Connection details for 3 water.
- Integrated Weighing System (IWS) – shows the weight of the load on the program display.
- Combined steam and electrical heated - gives possibilities to choose between electrical or steam heating by using a switch (only W4600H).
- Water inlet via pump-extra water inlet for water supply controlled by a pump from a recovery system.

Accessory

- Kit for connection to CMIS (Certus Management Information Systems) network. CMIS provides vital statistics, error codes, maintenance intervals, process receipt, etc.



CMIS can be fitted to washer extractors with Clarus Control, tumble dryers with Selecta Control and ironers with electronic control system. All you need to access and view the statistical feedback is a normal PC.